



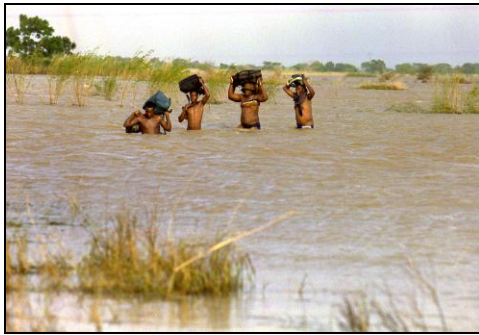
DG CLIMA – Adaptation to Climate Change

Matteo Rini, Adaptation Unit

Circle2 Annual Progress Meeting

Bologna, 21-22 June 2011

Impacts are already being felt in Europe and across the world



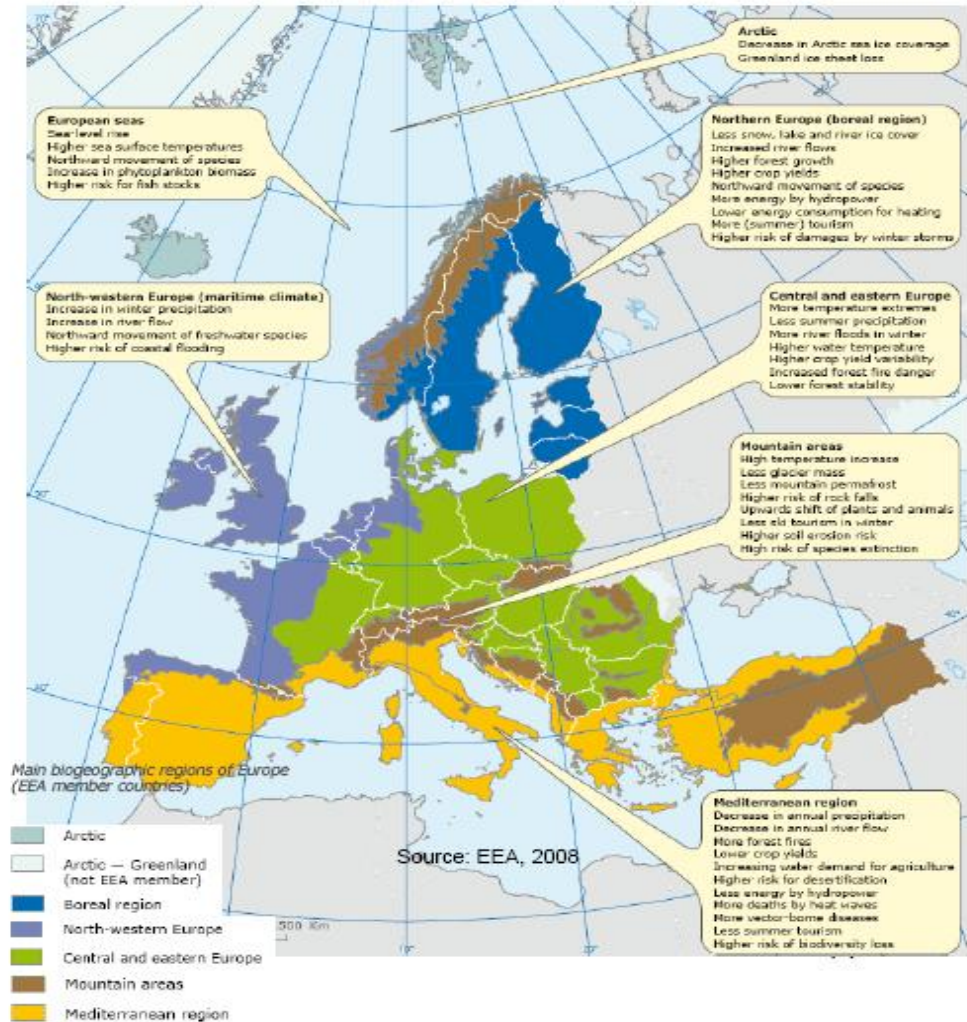
economies, societies and ecosystems need to adapt to:

- changes in weather patterns
- rising sea levels
- increased frequency and intensity of extreme weather events - storms, floods, droughts and heat waves

Cities are particularly vulnerable to the impacts of climate change due to high population density & physical infrastructure.

• **Most vulnerable areas in Europe:**

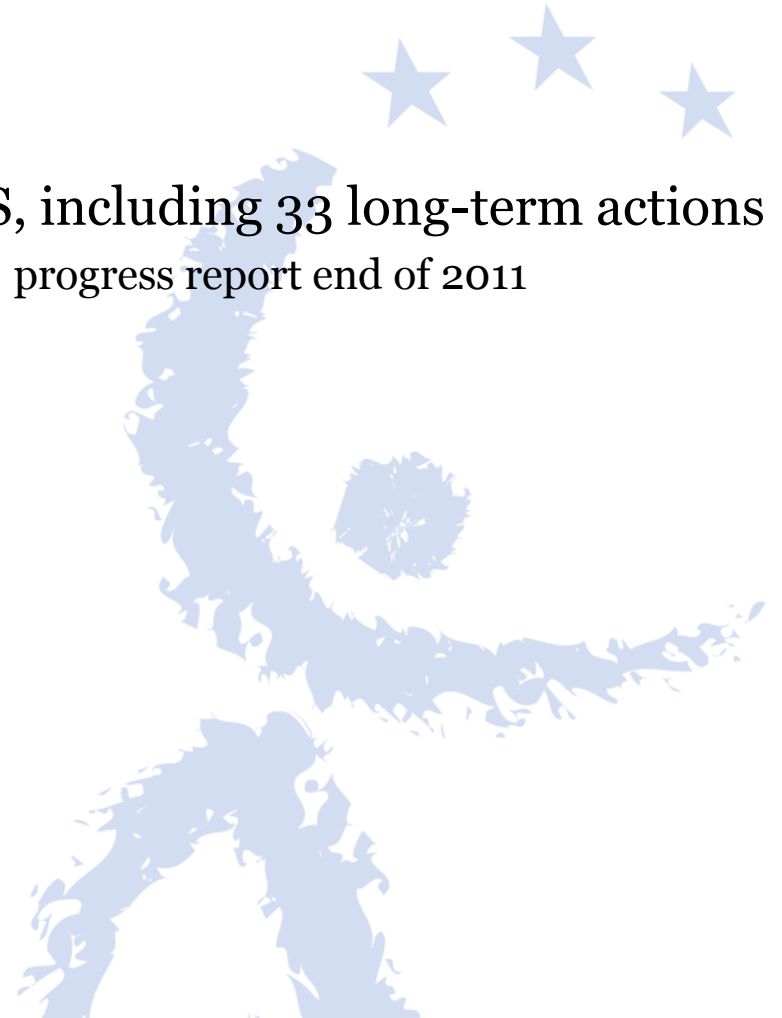
- **Southern Europe and the Mediterranean Basin**
- **Mountain areas, in particular the Alps**
- **Coastal zones, densely populated floodplains**
- **Arctic region**



- **EU:** Steer the implementation of the 2009 **White Paper on adaptation to Climate Change** in view of the development of an Adaptation Strategy foreseen for 2013 :
 - Mainstreaming of adaptation into different EU policies
 - **Development of the knowledge-base**
 - Cost-benefit analysis - costs of action and inaction in the different sectors and at different levels, national, regional and local. The role of the market-based instruments, in particular insurance and PPP

Implementation of the White Paper on Adaptation

- Covers the period : 2009-2012
- Outlines an action plan on four PILLARS, including 33 long-term actions
 - 29 actions are ongoing or already completed; progress report end of 2011



Strengthen the Knowledge Base

Establishing the EU “**Clearinghouse Mechanism**”

- provide access to key data sources on CC (including spatial maps, cost and benefit analysis)
- extensive library of adaptation measures, national and sub-national adaptation strategies and best practices
- a wizard-tool to guide policy-makers in the development of national or sub-national adaptation strategies/plans

State of Play:

- 1st prototype (Water, Agriculture) was delivered end of April; will be followed by evaluation and further development phase
- Operational in March 2012 – tool will be hosted and updated by EEA

Mainstreaming of adaptation into Key policy areas (1)

Influenced by **Communication on Budget Review** (Oct 2010) and **Multiannual Financial Framework** :

Cohesion policy:

- alignment to EU 2020 Strategy to be achieved through **Thematic priorities, conditionalities, indicators and monitoring, incentives**
- Key issues for DG CLIMA:
 - require that investments are climate proofed
 - Adequate funding for mitigation/adaptation to climate change
 - all Member States to use Cohesion Policy for Climate Action (compulsory priority)
 - Innovative Financing Mechanisms

Common Agricultural Policy (CAP) - “greening of the CAP”

- Moving away from income support and market measures -> giving priority to environmental and climate change objectives
- payments under Pillar I (annual direct payments and market measures) and Pillar II (multi-annual rural development measures) should contribute to the climate change challenge – e.g. rewards only for action beyond farmers’ current obligations under good agricultural environmental conditions (GAEC)
- climate proofing of long-term investments or land use change

- **Innovation, Research, Development**
 - FP7 – 2012/13: close collaboration with DG R&I, C3 proposals almost exclusively taken on board for 2012 call
 - FP8/common strategic framework for research and innovation: will need to dedicate a higher proportion of funding to climate change impacts, vulnerabilities, adaptation -> could support development and demonstration of adaptation technologies
 - All relevant research projects need to be climate-proof
- And others like Health (SANCO), migration issues (HOME), Energy and transport (infrastructures)

Develop Adaptation Financing Instruments

- **Climate-proofing of EU-funded investments** (under EU financial instruments, incl. CAP & Cohesion, LIFE+), guidance for implementation/investment level to be developed in 2011/12
- **Innovative market based instruments** – insurance and financial products & services.

Ongoing studies:

- **ClimateCost (RTD):** mitigation/adaptation costs of Agriculture, Infrastructure, Water, Biodiversity, Health, Energy; results will be delivered in July 2011
- **Climate-proofing:** study on main threats, their impacts on policy areas and how policies need to be adjusted to adapt to needs/threats; results to be delivered in Sept/Oct 2011
- **Methodologies for climate proofing investments and measures under cohesion and regional policy and CAP:** should provide guidance, training and capacity building material for the implementation of agricultural and cohesion/regional funds – June 2011
- **Cities:** capacity building & awareness raising project for designing & implementing adaptation strategies in European cities. Expect to sign contract in Dec 2011

The Strategy on Adaptation

- **Strategy** being developed and to be published in the first half of 2013; to provide for the strategic framework for the work on developing the EU's response to the adverse impacts of climate change
- **Link to the other key issues:** of immediate importance; will feed into the strategy and represent key building blocks of the strategy.
- **Related study:** Support to the development of the EU Adaptation Strategy, call to be published in May 2011
- **Adaptation Steering Group set up to** assist the Commission in developing its strategy and approach to dealing with adaptation.
- Membership: Member States and a diverse range of stakeholders.
- First two meetings held in 9/2010 and 1/2011, next meeting scheduled for 29 June 2011,
- Preliminary agenda for June: CAP-Reform, Presentation of Clearinghouse prototype, GMES, preparations of Informal PL ENV Council (July 2011))

Preview of the Clearinghouse Mechanism



<http://ec.europa.eu/clima/sites/change/>

Thank you!

